

Multi-Tech Industries

**Drop in Replacement Band Switch for
Kenwood TL-922 Amplifiers**

**Model 80 Switch
P/N R802G1130003**

<http://www.multi-tech-industries.com>

Email: multitech@sprynet.com

Front View

G-10 Shaft Material W/Double Flats

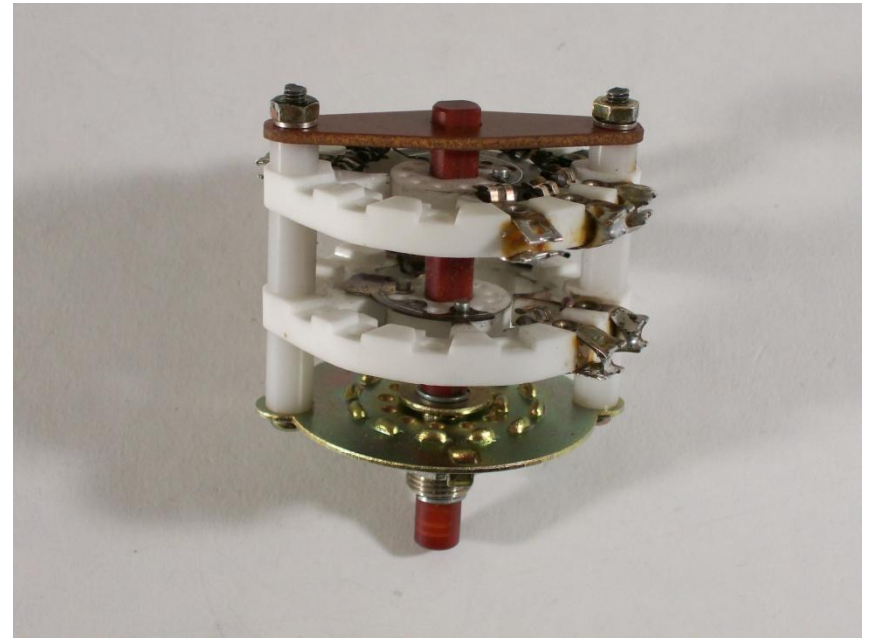
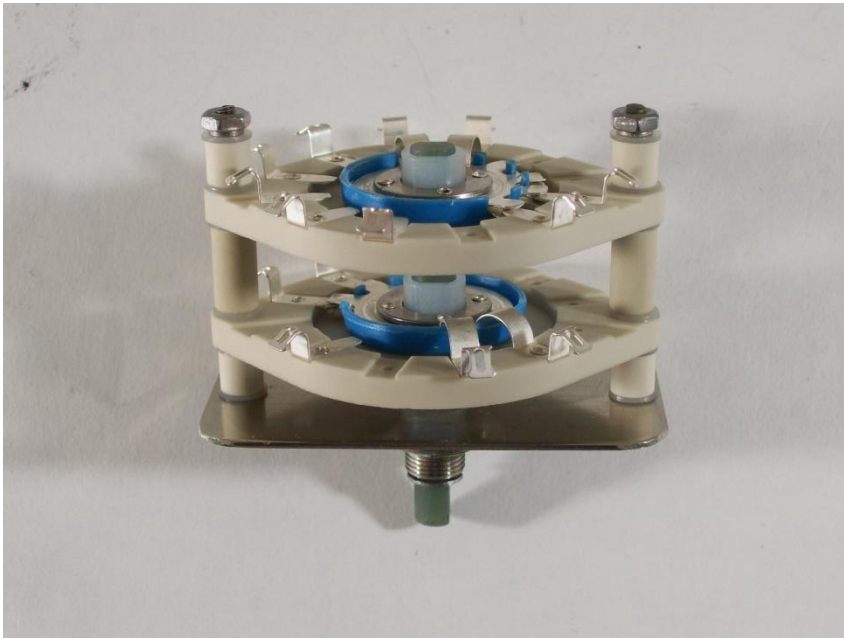
Model 80 Switch
P/N R802G1130003

Old Switch



Side View

Dual Decks W/ Corona Shields



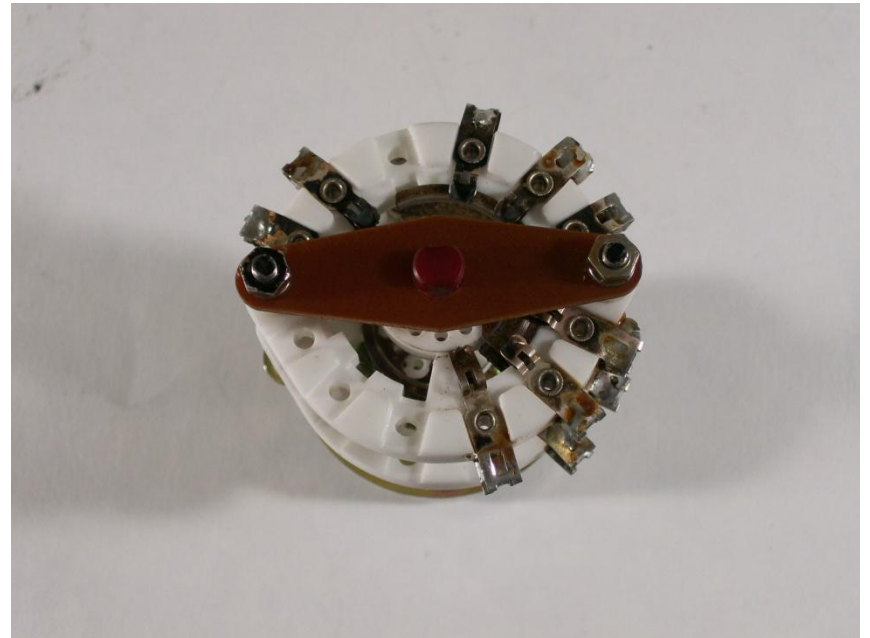
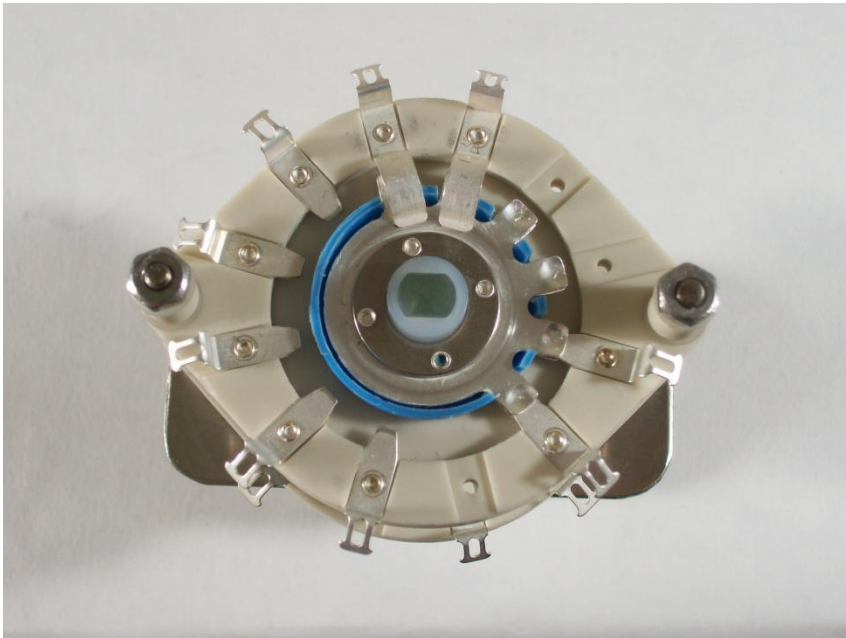
Rear View

Deck 1

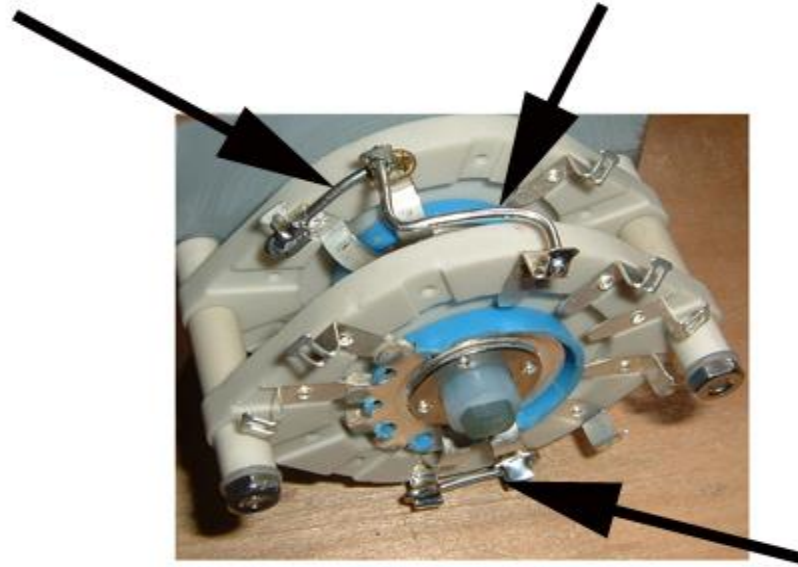
2 Pole W/ Double Commons

Deck 2

6 pole w/ Double Commons



Add Jumpers And Connect Commons Together As Shown



Before installation, connect the commons together on each deck. Also add the 10 meter jumper as shown in picture.

Place Amp On Desk Or Bench



A clean work area is important. I placed a towel under the Amp as I turned it on its side, to protect against scratches on the left side panel. The complete switch replacement took me under 2 hours start to finish.

Remove Top Covers



Remove the top cover and the RF cage shield cover. Turn the load capacitor fully counter clockwise.

Remove Bottom Cover And Right Side Panel

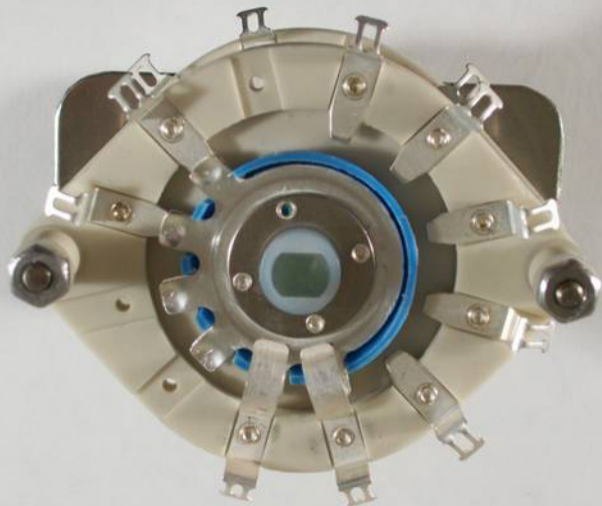


The side panel is removed to help with access to the upper switch contacts during removal and re-soldering.

Original Switch

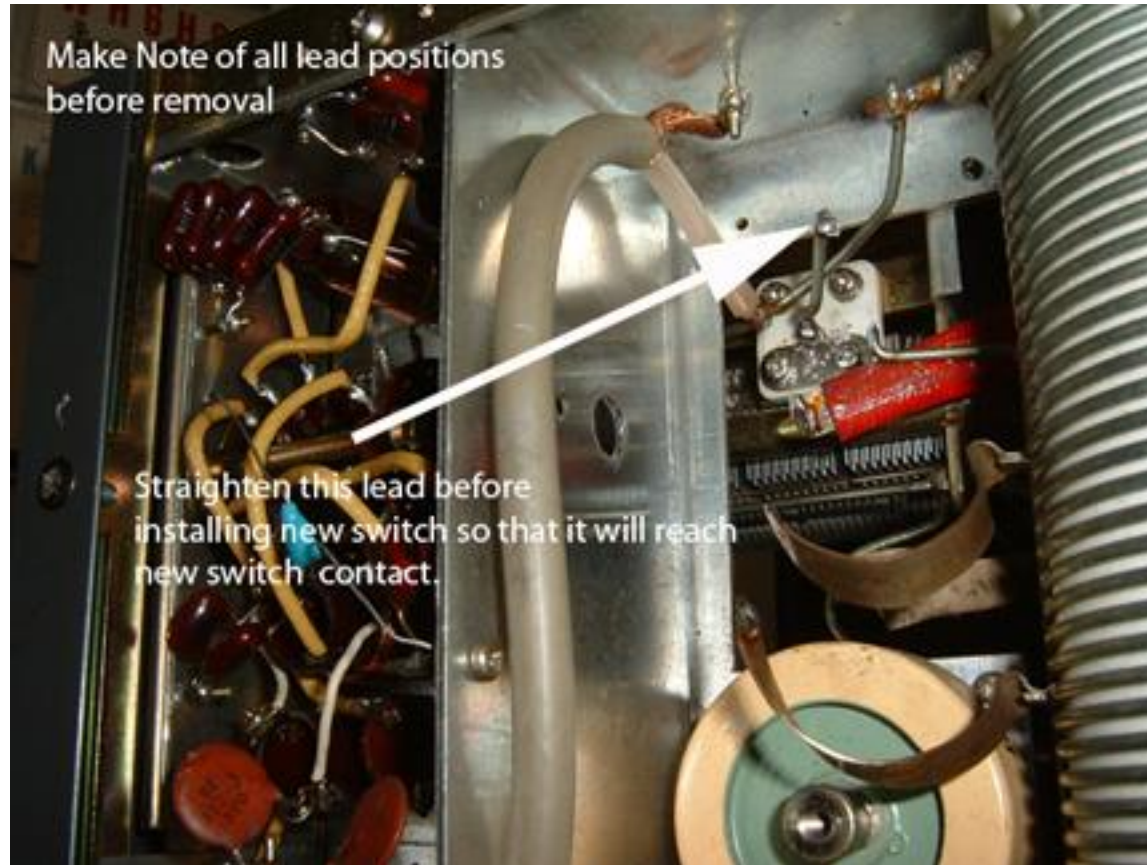


Make a note of the locations of all leads going to the switch prior to removal. I removed and set aside the wires going to the 80 meter and 160 meter caps during removal (as shown) for extra space during the removal of the old switch and installation of the new switch. Re-install and solder these once the new switch is in place.



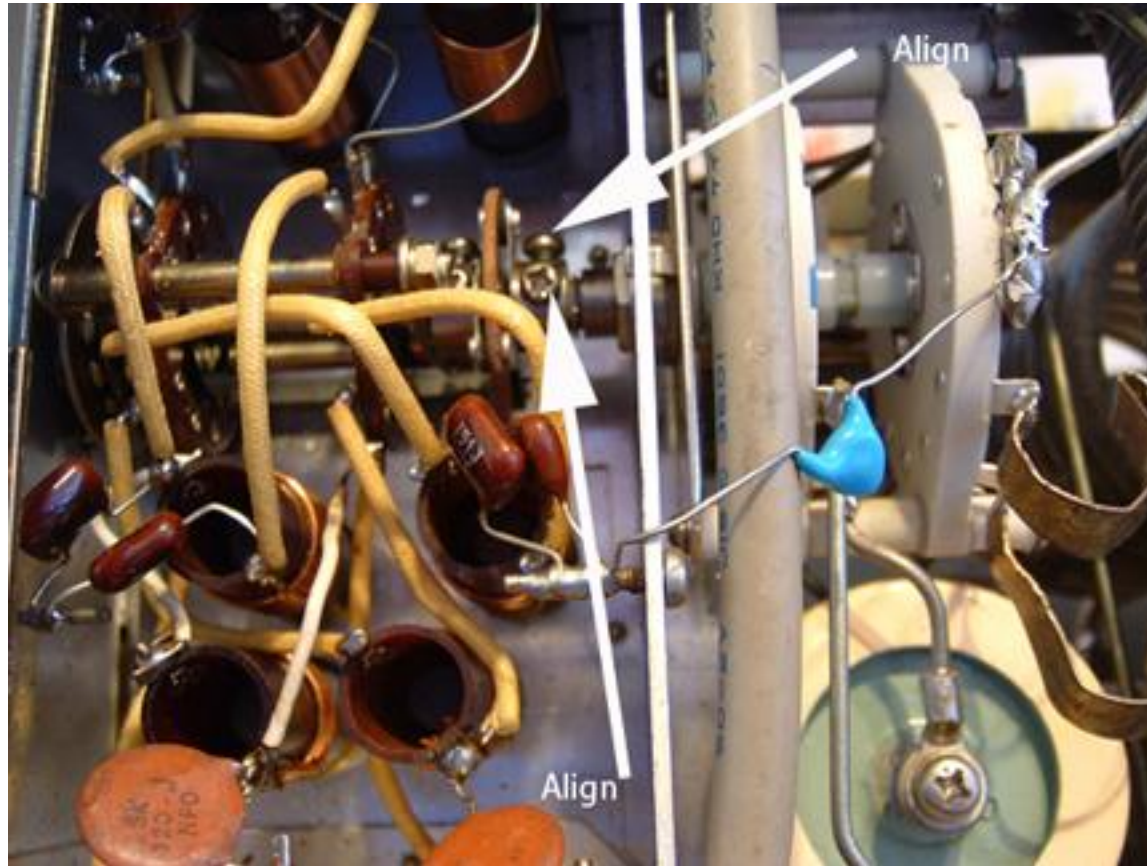
Switch shown in 160 meter position

Remove Old Band Switch



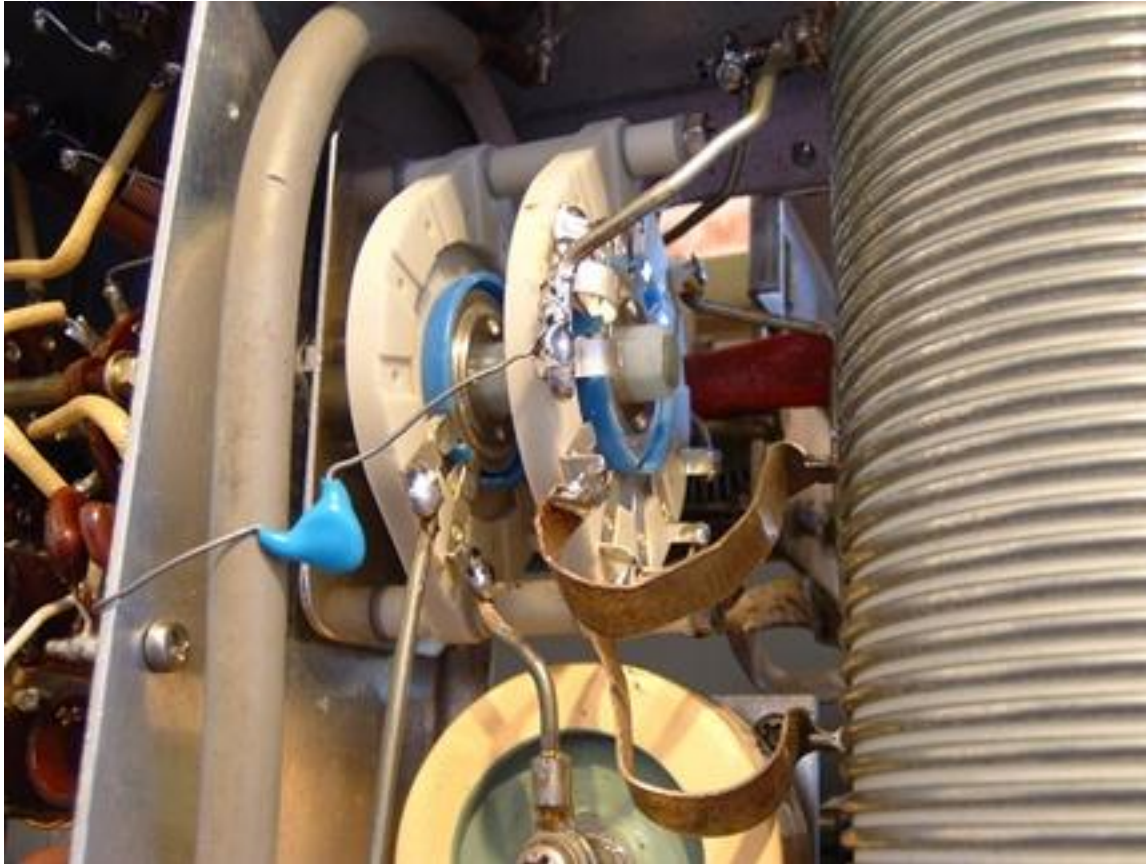
After unsoldering all the leads, I then loosened the 2 set screws on the old switch shaft and removed the 12mm nut and washer as I slid the old Switch out. Don't loosen the coupler set screws that are attached to the front input band switch. The short lead shown coming off the load capacitor must have the slight bend straightened out so that it reaches the contact solder point on the new band switch. The thin copper leads going to the coil are easily bent out of the way for clearance while sliding in the new switch.

Carefully Align Flats With Coupler



Carefully slide the new switch into place. You must install the nut and washer at the same time you slide the switch into position. Once in position, then tighten the 12mm nut. Once the nut is tight, then carefully tighten both the coupler set screws against their corresponding flats on the new switch. Now reconnect all the leads and solder. Take your time and double check each solder joint as you go.

Installed And Wired



The finished switch Installed. Double check that the switch contacts are perfectly centered as the switch is rotated through the band positions. Time to put the covers back on!!

**I tried to include all needed info for a simple switch installation in this file. Any questions or difficulties, feel free to Email Gordon, N6WK .
n6wk@n6wk.com**